

Kerlin Gallery

Anne's Lane, South Anne Street, Dublin 2, Ireland

T +3531 670 9093 F +3531 670 9096 gallery@kerlin.ie www.kerlin.ie

Isabel Nolan

ISABEL NOLAN

b.1974, Dublin, Ireland.

Isabel Nolan's new paintings are erupting, colourful landscapes, dissolved urban spaces or scenes that try to paint an impossible cosmic perspective into existence. They paint disorder and collapse into something beautiful but not cogent or explicable. Nolan has described the impetus to make them as a paradoxical desire to imagine how the world might look when humans are not around. Nolan's work consistently picks away at the blunting coherence of our human perspective as applied to the wildness and strangeness of nature. 'View (with eyes closed)' feels both intimate and cosmic, a landscape of colliding, looped forms and forces, a world or worlds simultaneously coalescing and disintegrating. Exploring fundamental tensions that operate in painting – figuration meets abstraction - the making of these works is in itself a metaphor for the ways we try to mould or force the world into being meaningful.

Solo exhibitions include: Ein Fuß in der Welt / One Foot in the World, Kunstverein Langenhagen, Germany (2018); Another View from Nowhen, London Mithraeum Bloomberg SPACE, UK (2017–18); Curling up with reality, Grazer Kunstverein, Austria (2017–2018); Calling on Gravity, Douglas Hyde Gallery, Dublin, Ireland (2017); The weakened eye of day, Mercer Union, Toronto and CAG, Vancouver (both Canada, 2016) and Irish Museum of Modern Art, Dublin, Ireland (2014), Group shows include: The air between things, two-person exhibition with Stephen McKenna, OCT Boxes Art Museum, Shunde, China (2019) and the 51st Venice Biennale representing Ireland as part of a group exhibition (2005). In late 2020 Launchpad will publish a survey of the last 10 years of Nolan's work which includes over 20 of the artist's writings.



View (with eyes closed)

2020

waterbased oil on canvas, hand-gilded 24 carat gold and painted clay frame

60 x 60 cm / 23.6 x 23.6 in

62.5 x 62.5 x 4.9 cm / 24.6 x 24.6 x 1.9 in framed

IN44920



View (back turned)

2020

waterbased oil on canvas, hand-gilded 24 carat gold and painted clay frame

60 x 80 cm / 23.6 x 31.5 in

62.5 x 82.5 x 4.9 cm / 24.6 x 32.5 x 1.9 in (framed)

IN45020



Tender Beams
2019

waterbased oil on canvas, hand-gilded 24 carat gold and painted clay frame

60 x 50 cm / 23.6 x 19.7 in

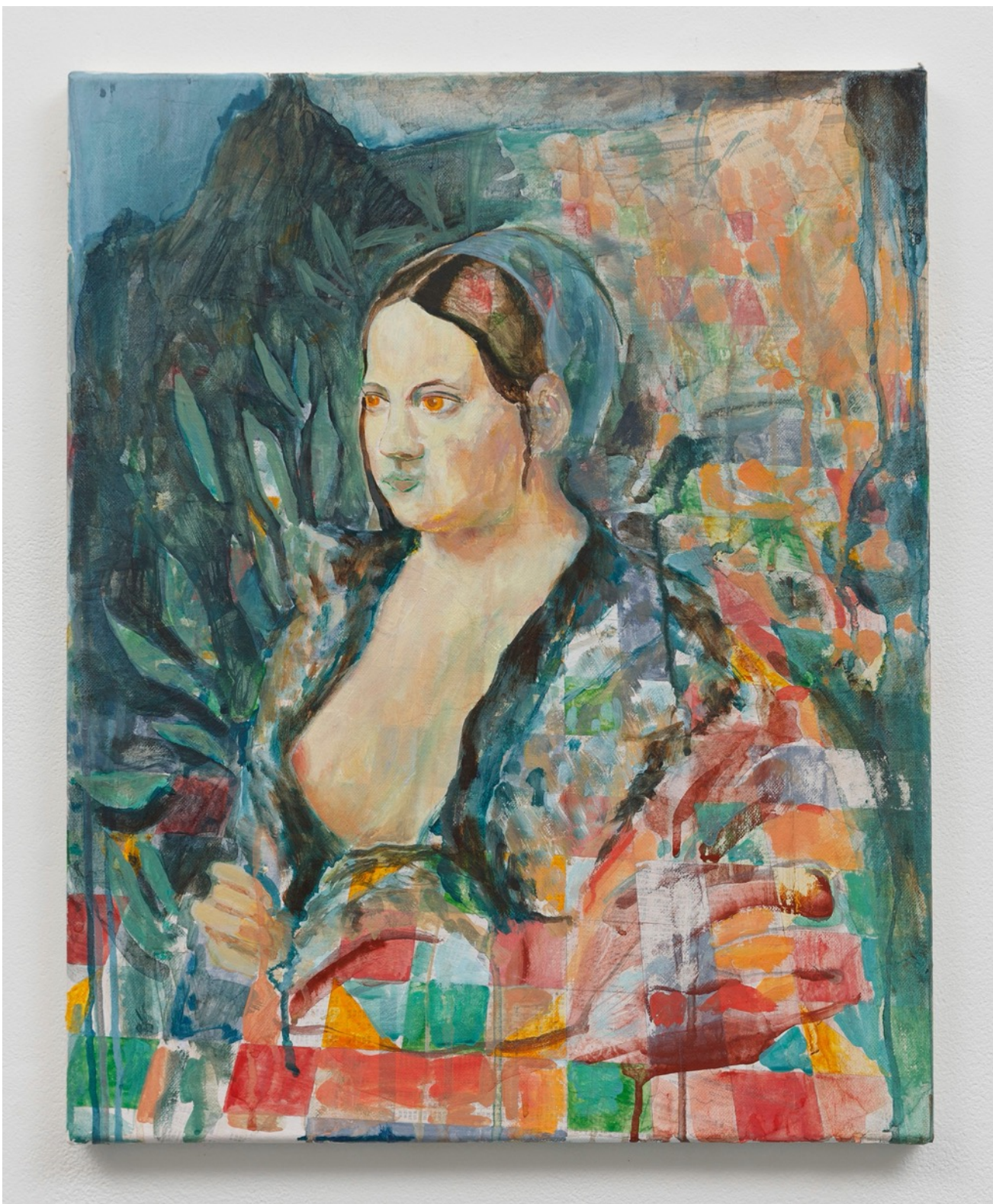
62.5 x 52.2 x 4.9 cm / 24.6 x 20.6 x 1.9 in framed

IN44419



to the hills
2019

Pencil and colouring pencil on paper
19.5 x 25.5 cm / 7.7 x 10 in image size
43.2 x 55.5 cm / 17 x 21.9 in framed
IN43919



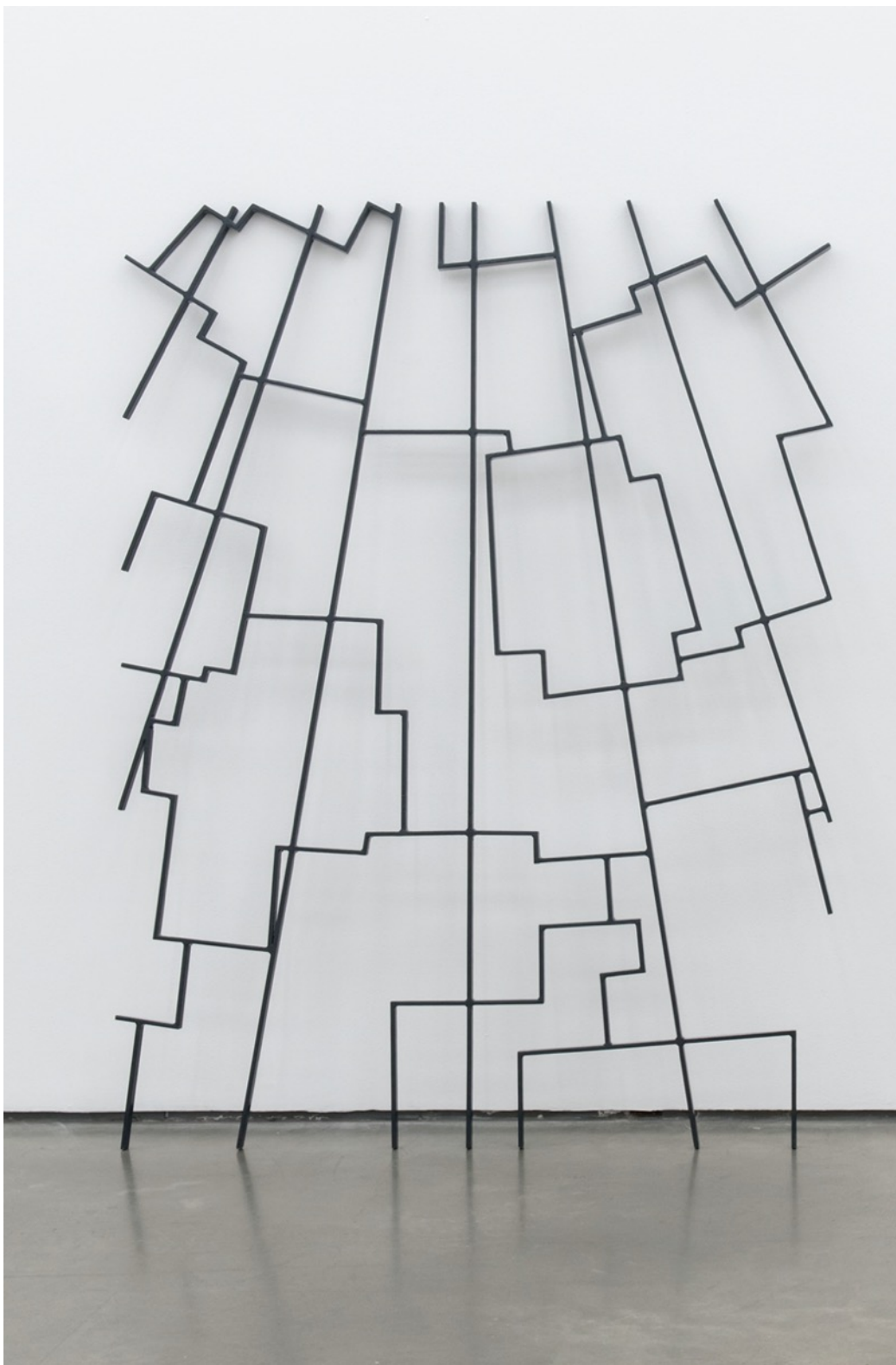
At the museum, 1506
2017
oil and collage on canvas
50 x 40 cm / 19.7 x 15.7 in
IN37417



Giordano Bruno dreams of Mount Cicada,
2017
waterbased oil on canvas
50 x 40 cm / 19.7 x 15.7 in
IN41317



The Light Poured Out Of You
2016
mild steel, paint, fabric and dye
134 x 3 cm / 52.8 x 1.2 in largest ring diameter
IN42018



Somewhere between Andromeda and Vulpecula: Sky Atlas
2014

mild steel, two-pack paint

1/4 from an edition of 4

210 x 160 x 3 cm / 82.7 x 63 x 1.2 in

IN28614-1/4



Harbinger
2014

handblown stained glass, mild steel and paint
edition of 3 + 1AP

66 x 2 x 78.5 cm / 26 x .8 x 30.9 in
IN28814

ISABEL NOLAN

b. Dublin, 1974

Lives and works in Dublin

CURRENT & FORTHCOMING EXHIBITIONS

2020 Double-M, Double-X, Kerlin Gallery, Dublin, Ireland. (Group Show)

SOLO EXHIBITIONS

2019 *The air between things*, Stephen McKenna & Isabel Nolan, China OCT Boxes Art Museum, Shunde District, Guangzhou, China

2018 *Ein Fuß in der Welt / One foot in the world*, Kunstverein Langenhagen, Germany

2017 *Another View from Nowhen*, London Mithraeum Bloomberg SPACE, London
Curling up with reality, Grazer Kunstverein, Graz, Austria
Calling on Gravity, Douglas Hyde Gallery, Dublin

2016 *Run for the Shadows*, Galerie Krinzinger, Vienna, Austria
The weakened eye of day, Contemporary Art Gallery (CAG), Vancouver; Mercer Union, Toronto

2015 *A Thing Is Mostly Space*, Launch Pad New York, New York
Bent knees are a give, Kerlin Gallery, Dublin

2014 *The weakened eye of day*, Irish Museum of Modern Art, Dublin
An answer about the sky, Sean Kelly Gallery, NYC, USA

2012 *Unmade*, The Return Gallery, Goethe-Institut Irland, Dublin

2011 *A hole into the future*, The Model, Sligo; Musée d'art moderne de Saint Etienne, France

2009 *on a perilous margin*, Kerlin Gallery, Dublin

2008 *The Paradise [29]*, Douglas Hyde Gallery, Dublin
Trance in Inaction, ARTSPACE, New Zealand

2007 *This time I promise to be more careful*, Kerlin Gallery, Dublin

2006 Gallery 3, Douglas Hyde Gallery, off-site project at Farmleigh House, Dublin
Here and Now, The Studio, Glasgow International, Glasgow
Rise to the occasion, Four, Dublin

2005 *Everything I said let me explain*, Project Arts Centre, Dublin
Together at last, Studio 6, IADT at Temple Bar Gallery & Studios, Dublin

2003 *Death creeps in through the mouth*, Goethe Institute, Dublin

1998 *I keep dreaming that I'm a fictional character*, Proposition Gallery, Belfast

SELECTED GROUP EXHIBITIONS

2019 *Extreme Imagination – inside the mind's eye*, Tramway, Glasgow travelling to Royal Albert Memorial Museum, Exeter, UK.

2018 *Sea Change*, Dún Laoghaire Lexicon, Dún Laoghaire, Ireland.
Die wechselnde Erscheinung / The Changing Appearance, Kunstverein Langenhagen, Langenhagen, Germany.
But still, like dust, I'll rise, Galway Arts Centre, Galway, Ireland.
Dorothy Cross, Aleana Egan, Siobhán Hapaska, Isabel Nolan, Kathy Prendergast, Kerlin Gallery, Dublin, Ireland

GROUP EXHIBITIONS CONTD.

- 2018 *Die wechselnde Erscheinung / The Changing Appearance*, Kunstverein Langenhagen, Germany
But still, like dust, I'll rise, Galway Arts Centre, Galway, Ireland
An Act of Hospitality Can Only Be Poetic, Highlanes Gallery, Drogheda, Ireland
EVA International, Limerick
- 2016 *Periodical Review 20/16*, Pallas Projects, Dublin
- 2015 Engage Arts Festival, Bandon, Co Cork, Ireland
Lofoten International Arts Festival (LIAF), Svølvær, Norway
- 2015 *An Imprecise Science*, Artspace, Sydney, Australia.
Überschönheit, Salzburger Kunstverein, Austria
- 2014 *PULL BITE RALLY*, NCAD Gallery, Dublin
Re Framing the Domestic in Irish Art, Highlanes Gallery, Drogheda
The Retired Architect, Wallspace Gallery, New York
- 2013 *Re/Turn*, Studio 10, Temple Bar Gallery + Studios, Barbara Knezevic & Isabel Nolan
The Black Moon, Palais de Tokyo, Paris
Beasts of England, Beasts of Ireland, Visual Carlow, curated by Stephen Brandes
Sculptrices, Villa Datriis, Fondation pour la Sculpture Contemporaine France
- 2012 *Into the Light*, Crawford Art Gallery, Cork; *The Model*, Sligo
Kerlin Gallery, Dublin
Gracelands, Circling The Square, The Milk Market, Limerick
EVA International, *After the Future*, Limerick
Laurence Callaghan and Isabel Nolan, Rhubaba Gallery, Edinburgh
Dogs, Ormston House, Limerick
- 2011 *Collecting for Ireland*, The Hunt Museum, Limerick
Gracelands: Substance Abuse, Dromahair, Co. Leitrim, Ireland
Beholder, Talbot Rice Gallery, Edinburgh
- 2010 *King Rat*, Project Arts Centre, Dublin
What you see is where you're at, Scottish National Gallery of Modern Art, Edinburgh
Gracelands, I'm Sparticus, Dromahair, Co. Leitrim, Ireland
- 2009 *Fragile, Fields of empathy*, Musée d'art moderne de Saint Etienne, France;
Accademia d'Ungheria, Rome; The Daejeon Museum of Art, South Korea
Mehr Als ein T-shirt, Bielefelder Kunstverein, Germany
Into Irish Drawing, Limerick City Gallery of Art, Ireland; AkkuH, Hengelo,
The Netherlands
Centre Culturel Irlandais, Paris;
Millennium Court Arts Centre, Portadown, Northern Ireland
Gracelands, Folly, Dromahair, Co. Leitrim, Ireland
- 2008 *Micro-narratives: tentation des petites réalités*, Musée d'art modern et contemporain de Saint
Etienne, France
Order, Desire, Light, Irish Museum of Modern Art, Dublin
Self as Selves, Irish Museum of Modern Art, Dublin
- 2006 *If I Can't Dance, I Don't Want to Be Part of Your Revolution*, De Appel, Amsterdam
100 Tage = 100 Videos, Heidelberger Kunstverein, Germany
- 2005 *Ireland at Venice*, Venice Biennale, Italy, travelling to Glucksman Gallery, Cork
- 2004 *Coalesce: With All Due Intent*, The Model, Sligo
Tír na nÓg, Irish Museum of Modern Art, Dublin
Views from an Island, Millennium Monument, Beijing;
Shanghai Art Museum, China
- 2003 *Permaculture*, Project Arts Centre, Dublin
- 2002 *How Things Turn Out*, Irish Museum of Modern Art, Dublin
- 1998 EVA International, Limerick

For further information please contact

Darragh Hogan
darragh@kerlin.ie

+353 1 67090993